

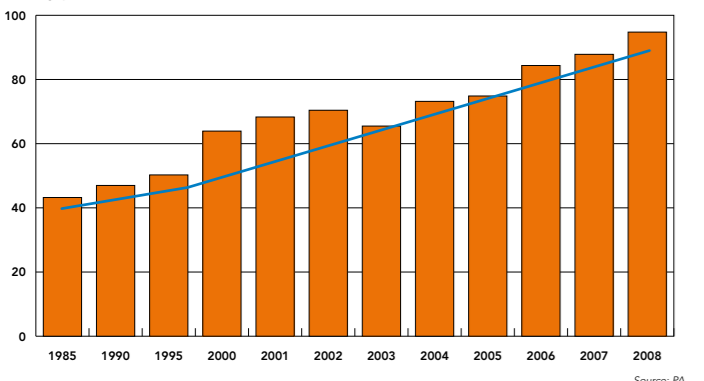
Cargo throughput

Incoming and outgoing cargo by commodity in Amsterdam Ports 2007-2008

Year	2007			2008		
	IN	OUT	TOTAL	IN	OUT	TOTAL
Total tonnage	63.178	24.416	87.593	67.348	27.420	94.768
Liquid bulk	12.289	14.360	26.649	16.791	16.989	33.780
of which: Crude Oil	18	18	36	33	2	35
Refined Products	10.788	14.100	24.889	14.521	16.047	30.568
Energy Gases	83	83	166	119	2	121
Other Liquid Bulk	1.420	260	1.680	2.118	939	3.057
Dry Bulk	45.983	51.895	97.878	45.466	53.177	98.643
of which: Cereals	2	87	89	61	61	122
Cattle Feed	6.201	1.061	7.262	5.483	552	6.035
Oil Seeds	897	98	995	720	2.369	3.089
Coal	20.145	2.000	22.145	20.082	2.129	22.211
Ones	9.963	975	10.937	9.658	769	10.427
Fertilizers	801	568	1.369	553	1.390	1.943
Other Dry Bulk	7.975	402	8.377	7.485	532	8.017
Total Bulk	58.272	19.549	77.820	62.257	22.306	84.563
General Cargo	4.906	4.867	9.773	5.091	5.114	10.205
of which: Containers in mln. tonnes	1.955	1.593	3.548	2.043	1.862	3.905
Ro/Ro	776	349	1.125	689	406	1.095
Other General Cargo	2.174	2.925	5.099	2.359	2.846	5.205
Number of Containers in total (Total) TEU*	124.501	120.195	244.696	135.014	131.317	266.331
Number of Empty Containers	197.028	188.576	385.604	218.761	216.368	435.129
Empty TEU	13.475	45.312	58.787	13.593	46.223	59.816
Number of Loaded Containers (Loaded) TEU	111.026	74.883	185.909	121.421	85.094	206.515
	176.530	118.855	295.385	195.335	139.611	334.946

* TEU Twenty-foot Equivalent Units
Unit: Gross weight x 1.000 metric tons

Throughput Amsterdam Ports (in mln. tons), 1985-2008



Source: PA

For more statistics and detailed information surf to www.portofamsterdam.nl

Dutch version > Feiten en cijfers > Statistieken

English version > Facts & Figures > Port Statistics

Cargo throughput

Total throughput by commodity in Amsterdam Ports, 2007-2008*

Commodity	2007		2008	
	Amsterdam	Beverwijk	Umuuiden	Zaanstad
Total	8.323	9.891	21	8.344
Agribulk	17.266	98	10.937	22.145
Ores and scrap	24.866	3	4.879	24.866
Mineral oil products	10.413	199	915	11.527
Total Bulk	61.816	300	15.685	77.822
Roll on/roll off Containers, flats	1.125		1.125	
Other general cargo, lash	3.435	113	3.548	
Total general cargo	4.999	241	3.216	5.099
Total	6.059	241	3.329	9.794
Total throughput	67.874	541	19.014	165
Number of loaded vessels	5.310	225	2.859	59

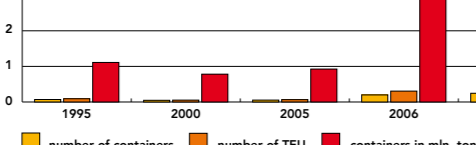
* In 2008 number of loaded vessels and cargo throughput at the U-palen have been added to Port of Amsterdam instead of Umuuiden.

Incoming and outgoing cargo by commodity in Amsterdam Ports, 2007-2008*

Commodity	2007		2008	
	Amsterdam	Beverwijk	Umuuiden	Zaanstad
Total	46.974	216	15.978	10
In	20.901	325	3.035	155
Out	26.073	-109	12.943	-145
Total	67.874	541	19.013	165
Total	67.874	541	19.013	165
Total	67.874	541	19.013	165

* From 2008 cargo throughput at the U-palen has been added to Port of Amsterdam instead of Umuuiden.

Throughput containers Port of Amsterdam, 1995-2008



Source: PA

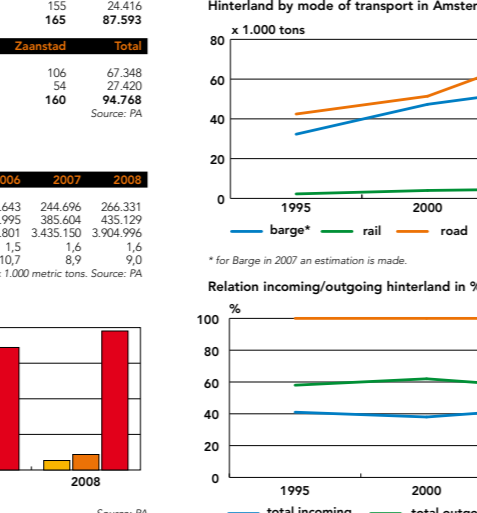
Cargo throughput

Total national and international traffic in Amsterdam Ports by mode of transport, 1995-2007

Mode	1995-2007					
	1995	2000	2005	2006	2007	2007-1995 in %
Incoming	10.325	12.860	20.445	21.667	22.967	122
Barge*	992	1.561	1.437	1.599	1.492	50
Rail	20.244	24.493	38.307	38.215	38.819	92
Road	3.169	6.800	16.701	16.653	16.656	426
Total	31.561	38.914	60.189	61.391	63.278	100
Outgoing	19.955	20.144	20.005	20.006	20.007	2007-1995 in %
Barge*	21.618	34.459	35.690	37.815	40.083	85
Rail	1.245	2.427	3.373	3.979	2.963	138
Road	22.119	26.901	45.638	38.860	38.860	76
Total	44.981	63.787	76.339	78.472	81.906	82
Incoming + Outgoing	19.955	20.144	20.005	20.006	20.007	2007-1995 in %
Barge*	32.278	47.319	56.135	59.482	63.050	95
Rail	2.247	4.856	4.810	5.488	4.455	98
Road	42.430	51.394	75.583	74.893	77.679	83
Total	76.955	102.701	136.528	139.863	145.184	89

Unit: Gross weight x 1.000 metric tons

Hinterland by mode of transport in Amsterdam Ports, 1995-2007



Source: CBS

Cargo throughput

Place of origin (cargo throughput, incoming traffic) Port of Amsterdam, 2007-2008

Country	Origin 2007		Origin 2008	
	2007	2008	2007-2008 in %	2008-2007 in %
1. Colombia	4.760.904	6.525.634	37,1%	37,1%
2. United Kingdom	5.192.278	5.428.539	4,6%	4,6%
3. Brazil	3.489.971	4.942.819	41,6%	41,6%
4. Russia	4.690.089	4.417.036	4,6%	4,6%
5. United States	2.447.329	4.440.060	81,4%	81,4%
6. Norway	3.152.217	3.210.044	1,8%	1,8%
7. Latvia	1.294.930	2.086.656	61,1%	61,1%
8. Netherlands	339.596	1.927.997	467,7%	467,7%
9. South Africa	1.418.949	1.731.823	22,0%	22,0%
10. France	1.446.593	1.518.065	4,9%	4,9%
11. Japan	32.119	34.3	13,5%	13,5%
12. Indonesia	1.040.562	1.020.734	-1,9%	-1,9%
13. Argentina	2.003.686	854.593	-57,3%	-57,3%
14. China	1.105.162	822.813	-25,5%	-25,5%
15. Israel	796.746	821.177	2,8%	2,8%
16. Malaysia	662.106	811.260	22,5%	22,5%
17. Spain	612.589	793.315	29,5%	29,5%
18. Finland	736.338	786.570	6,8%	6,8%
19. Sweden	751.713	750.070	-0,2%	-0,2%
20. Thailand	313.958	507.181	61,5%	61,5%
21. Singapore	580.186	391.680	-32,5%	-32,5%
22. Trinidad & Tobago	169.692	346.966	104,5%	104,5%
23. Canada	40.150	341.446	750,4%	750,4%
24. Nigeria	102.520	325.784	217,8%	217,8%
25. Germany	224.492	283.793	26,4%	26,4%
26. Ukraine	35.377	249.134	604,2%	604,2%
27. India	222.844	246.045	10,4%	10,4%
28. Belgium	143.294	226.902	58,3%	58,3%
29. Estonia	603.099	218.022	-63,8%	-63,8%
30. Mexico	204.984	185.930	-10,2%	-10,2%
Others	7.464.737	4.072.598	-45,4%	-45,4%
Total	46.973.873	51.574.764	9,7%	9,7%

Unit: Gross weight x 1.000 metric tons

Place of destination (cargo throughput, outgoing traffic) Port of Amsterdam, 2007-2008

Country	Destination 2007		Destination 2008	
	2007	2008	2007-2008 in %	2008-2007 in %
1. Nigeria	3.767.440	5.353.308	42,1%	42,1%
2. United States	3.577.709	3.967.192	10,9%	10,9%
3. United Kingdom	2.759.659	2.877.922	4,3%	4,3%
4. Mexico	1.376.183	2.875.982	109,0%	109,0%
5. France	696.942	2.594.942	273,3%	273,3%
6. Japan	571.280	2.584.168	452,9%	452,9%
7. Turkey	407.104	543.386	32,7%	32,7%
8. Poland	305.688	546.787	78,9%	78,9%
9. Germany	481.831	481.831	0,0%	0,0%
10. Canada	238.674	368.360	54,3%	54,3%
11. Finland	310.798	364.356	17,2%	17,2%
12. Spain	429.430	347.170	-19,2%	-19,2%
13. Norway	339.125	339.909	0,2%	0,2%
14. Sweden	256.381	338.240	31,9%	31,9%
15. Singapore	166.273	329.004	97,9%	97,9%
16. Russia	278.051	326.303	17,4%	17,4%
17. Egypt	195.199	296.848	52,1%	52,1%
18. China	125.616	249.379	98,4%	98,4%
19. Gibraltar (British)	563.814	241.906	-57,1%	-57,1%
20. Portugal	190.214	230.935	21,4%	21,4%
21. Ghana	125.266	213.582	70,5%	70,5%
22. Ireland	191.711	213.213	10,1%	10,1%
23. Netherlands	116.628	176.839	51,6%	51,6%
24. United Arab Emirates	336.031	167.847	-49,7%	-49,7%
25. Denmark	133.840	161.570	20,7%	20,7%
26. Namibia	133.740	133.740	0,0%	0,0%
27. Saudi Arabia	113.177	126.558	11,8%	11,8%
28. Angola	125.119	123.944	-0,9%	-0,9%
29. Malaysia	79.500	119.500	50,0%	50,0%
30. Latvia	73.405	73.405	0,0%	0,0%
Others	174.699	1.385.562	57,8%	57,8%
Total	20.900.622	24.214.176	15,9%	15,9%

Unit: Gross weight x 1.000 metric tons

Cargo throughput

Place of origin (cargo throughput, incoming traffic) Port of Amsterdam, 2007-2008

Country	Origin 2007		Origin 2008	
	2007	2008	2007-2008 in %	2008-2007 in %
1. Colombia	4.760.904	6.525.634	37,1%	37,1%
2. United Kingdom	5.192.278	5.428.539	4,6%	4,6%
3. Brazil	3.489.971	4.942.819	41,6%	41,6%
4. Russia	4.690.089	4.417.036	4,6%	4,6%
5. United States	2.447.329	4.440.060	81,4%	81,4%
6. Norway	3.152.217	3.210.044	1,8%	1,8%
7. Latvia	1.294.930	2.086.656	61,1%	61,1%
8. Netherlands	339.596	1.927.997	467,7%	467,7%
9. South Africa	1.418.949	1.731.823	22,0%	22,0%
10. France	1.446.593	1.518.065	4,9%	4,9%
11. Japan	32.119	34.3	13,5%	13,5%
12. Indonesia	1.040.562	1.020.734	-1,9%	-1,9%
13. Argentina	2.003.686	854.593	-57,3%	-57,3%
14. China	1.105.162	822.813	-25,5%	

